



SURTEC

Les spécialistes
de l'autonomie énergétique



JIAWEI EUROPE
SOLAR ENERGY SYSTEMS

JW-S100

100W Monocrystalline Photovoltaic Module

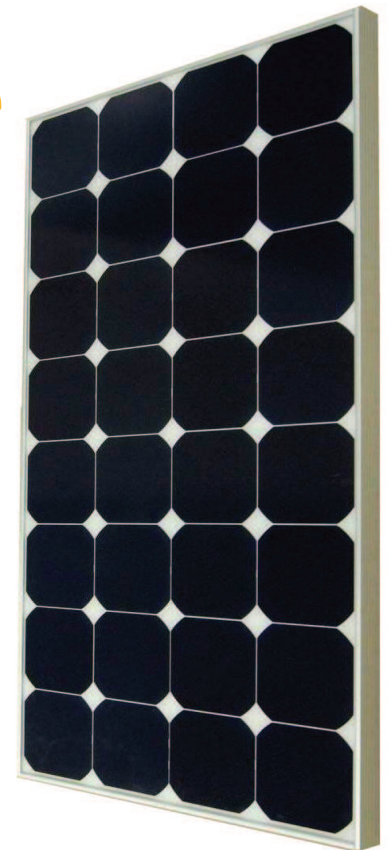
High Efficiency Back-Contact Solar Modules

Jiawei's 100W monocrystalline modules has multiple advantages. These modules are made with back-contact monocrystalline solar cells which are aesthetically please in appearance. The cells have a unique structure, different from conventional cells, they yield average conversion efficiencies up to 20%.

Features

- Photovoltaic modules made with unique back connected cells
- Cells with high conversion efficiency up to 20%
- Black modules available on request
- Manufactured in ISO9001 and ISO14001 certified factory
- Also available in various frame colours
- Design to charge 12 to 48 V batteries for off-grid remote systems
- Made with high quality materials which qualifies high reliability of modules

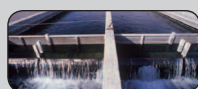
Applications



Telecommunication



Water pumping for various
agriculture



Aquaculture applications



Cathodic protection



Lighting systems for emergency
use and railroad



Desalination systems



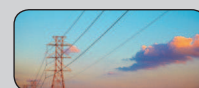
Electricity for remote
villages



Security cameras



Remote sensors



Telemetry equipment



JW-S100

Electrical Parameters

| | |
|------------------------------|---------|
| Max Power (Pm) | 100W |
| Voltage at Max Power (Vmp) | 17.9V |
| Current at Max Power (Imp) | 5.59A |
| Open Circuit Voltage (Voc) | 21.6V |
| Short Circuit Current(Isc) | 6.15A |
| Cell Efficiency | 21.0% |
| Module Efficiency | 18.9% |
| Max Power Tolerance | -5/+10% |
| Nominal Operating Cell Temp. | 46°C ±2 |
| Max System Voltage | 70V |

Mechanical Parameters

| | |
|------------------|---|
| Cells Type & No. | 32 Mono. BackContact |
| Frame | >15µm clear anodized |
| Junction Box | Cixi Renhe/PV-RH0502(IP65) |
| Connector | Cixi Renhe |
| Dimensions | 1037 x 527 x 35 mm (40.83 x 20.75 x 1.38 in) |
| Weight | 7.4kg (16.3 lbs) |

Temperature Coefficients

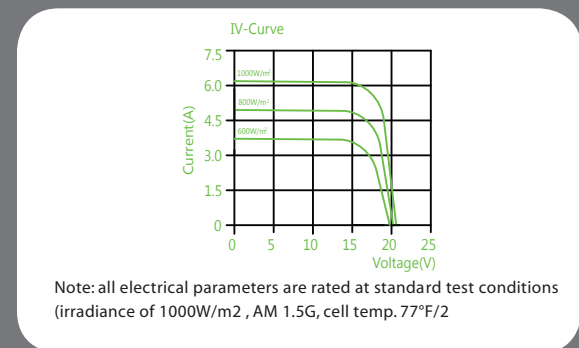
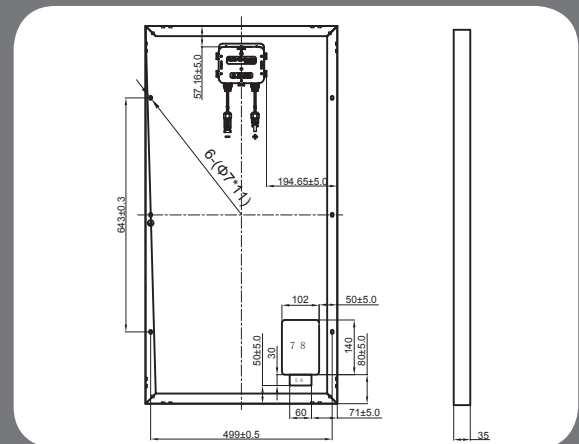
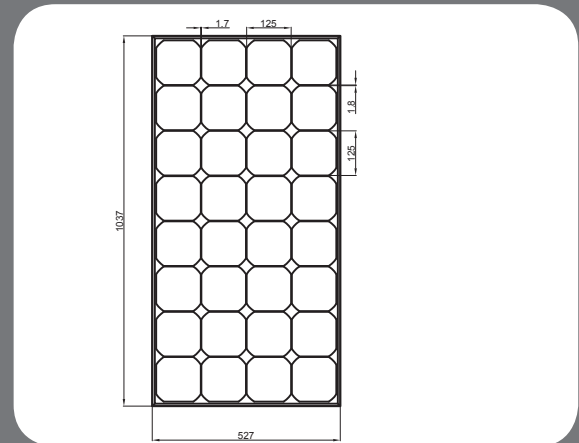
| | |
|---------|------------|
| Power | -0.38%/°C |
| Voltage | -60.8mV/°C |
| Current | 3.5mA/°C |

Warranties & Certifications

Warranties: 2 years product
10 years limited power warranty of 90% of the minimum specified power rating
Certifications: CE



Diagram



We Harvest **The Sun** for your future