



**SURTEC**

Les spécialistes  
de l'autonomie énergétique



**JIawei EUROPE**  
**SOLAR ENERGY SYSTEMS**

**JW-S120**

# 120W Monocrystalline Photovoltaic Module

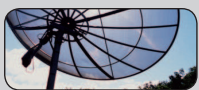
High Efficiency Back-Contact Solar Modules

Jiawei's 120W monocrystalline modules has multiple advantages. These modules are made with back-contact monocrystalline solar cells which are aesthetically please in appearance. The cells have a unique structure, different from conventional cells, they yield average conversion efficiencies up to 20%.

## Features

- Photovoltaic modules made with unique back connected cells
- Cells with high conversion efficiency up to 20%
- Black modules available on request
- Manufactured in ISO9001 and ISO14001 certified factory
- Also available in various frame colours
- Design to charge 12 to 48 V batteries for off-grid remote systems
- Made with high quality materials which qualifies high reliability of modules

## Applications



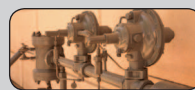
Telecommunication



Water pumping for various agriculture



Aquaculture applications



Cathodic protection



Lighting systems for emergency use and railroad



Desalination systems



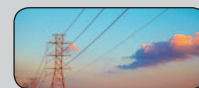
Electricity for remote villages



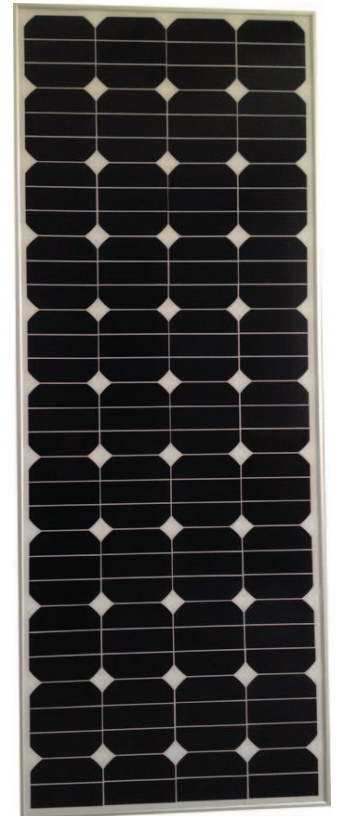
Security cameras



Remote sensors



Telemetry equipment





## JW-S120

### Electrical Parameters

Max Power (Pm)	120W
Voltage at Max Power (Vmp)	16.8V
Current at Max Power (Imp)	7.15A
Open Circuit Voltage (Voc)	20.1V
Short Circuit Current (Isc)	8.01A
Cell Efficiency	19.4%
Module Efficiency	15.4%
Max Power Tolerance	± 5%
Nominal Operating Cell Temp.	46°C ±2
Max System Voltage	70V

### Mechanical Parameters

Cells Type & No.	128 Mono. BackContact
Frame	>15µm clear anodized
Junction Box	Cixi Renhe/PV-RH0502 (IP65)
Connector	Cixi Renhe
Dimensions	1430 x 545 x 35mm
Weight	10.80kg

### Temperature Coefficients

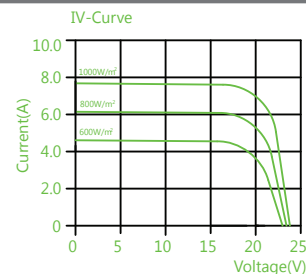
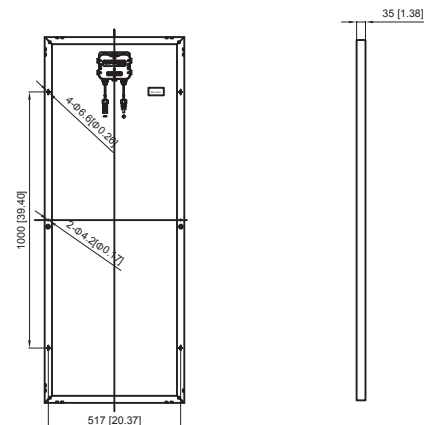
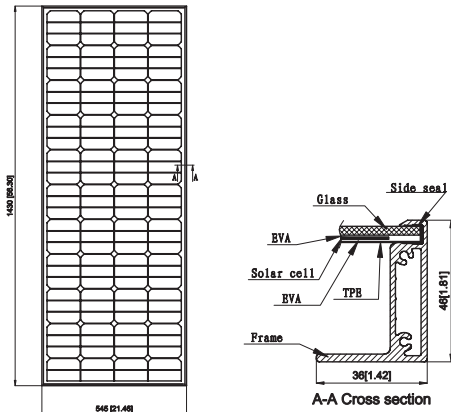
Power	-0.38%/°C
Voltage	-58.7mV/°C
Current	5.30mA/°C

### Warranties & Certifications

Warranties: 2 years product  
10 years limited power warranty of 90% of the minimum specified power rating  
Certifications: CE



### Diagram



Note: all electrical parameters are rated at standard test conditions (irradiance of 1000W/m<sup>2</sup>, AM 1.5G, cell temp. 77°F/25°C)

We Harvest **The Sun** for your future